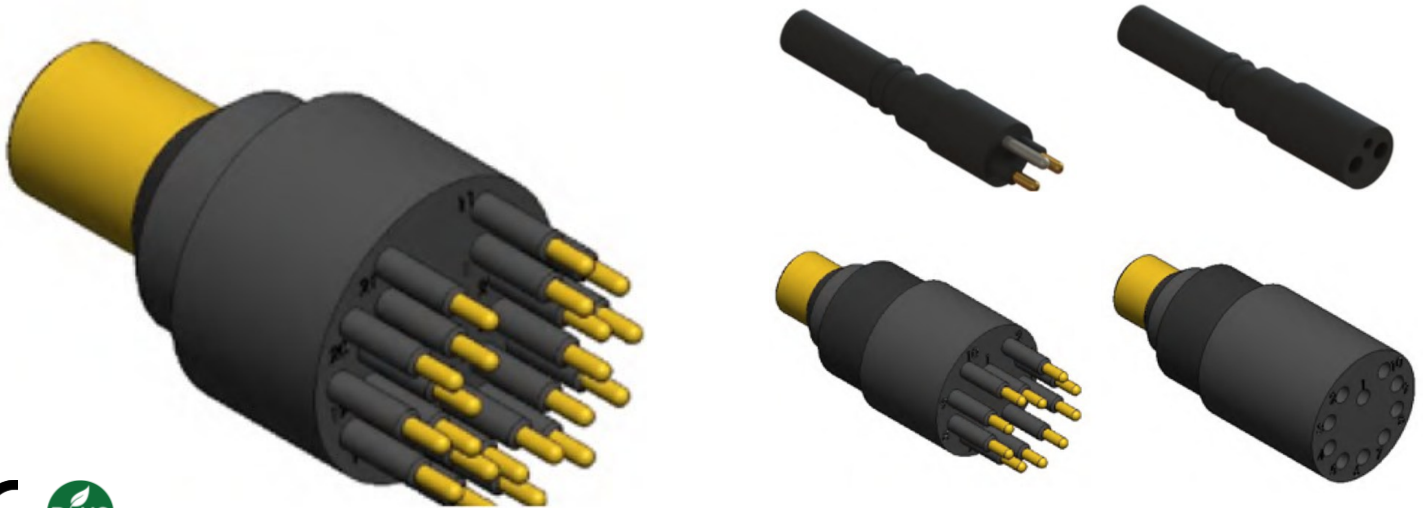


Micro Circular Overmold Wet-Mate Underwater Connector



The PSE237 Micro Circular Overmold Wet-Mate Underwater Connector is a compact, rugged connector designed for reliable subsea power and signal transmission in demanding underwater environments. Available in male and female configurations with 2 to 21 contacts, it supports up to 300 VDC, features gold-plated contacts for strong conductivity and corrosion resistance, and is rated for depths up to 8700 PSI (600 bar). Its chloroprene rubber body and overmolded construction provide durable performance in harsh marine applications, while customizable cable lengths and configurations allow it to fit a wide range of subsea systems.

Build Your Part Number

Example: **PSE237M4C1200**

Series	
PSE237	
Type - select one	
M	Male
F	Female
Contacts - select one (view specs on pages 2-4)	
2C	2 Contacts
3C	3 Contacts
4C	4 Contacts
5C	5 Contacts
6C	6 Contacts
8C	8 Contacts
10C	10 Contacts
12C	12 Contacts
16C	16 Contacts
21C	21 Contacts
Cable Length – specify in feet	
XX	Cable length in feet (ex. 1200 feet = 1200)

Note: Cabling, contacts, and connector configuration can be customized per customer specification

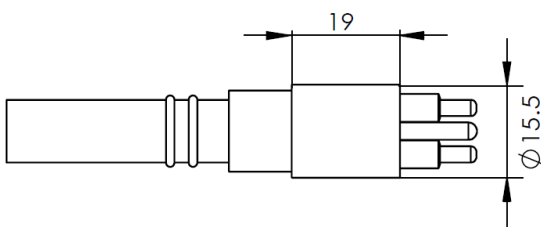
2, 3, 4, 5, 6, 8 Contacts



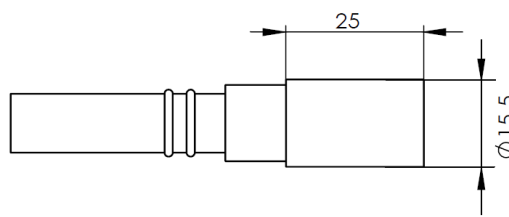
Operation Specification	
Max. voltage	300 V DC
Current rating @contact	Contact 2,3,4: 10A
	Contact 5,6,8: 5A
Max. current @connector	20A
Insulation resistance	>200 Mohm
Contact resistance	<0.01 ohm
Depth rating	600 bar
Temperature rating	-40 to 60°C

Material Specification	
Connector body	Chloroprene rubber
Contact	Gold plated brass
Socket	Gold plated Beryllium copper
Location pin	Contact 2,3,4: Stainless steel 316
	Contact 5,6,8: N/A
OM leads	Contact 2,3,4: AWG 18 PTFE, 10cm (AWG 20 PTFE optional)
	Contact 5,6,8: AWG 20 PTFE, 10cm

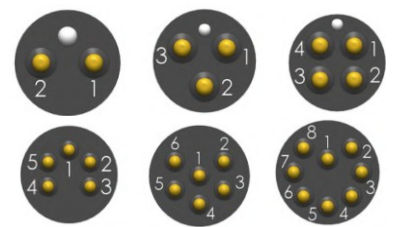
Dimensions are in millimeters; Threads are in inches



Male



Female

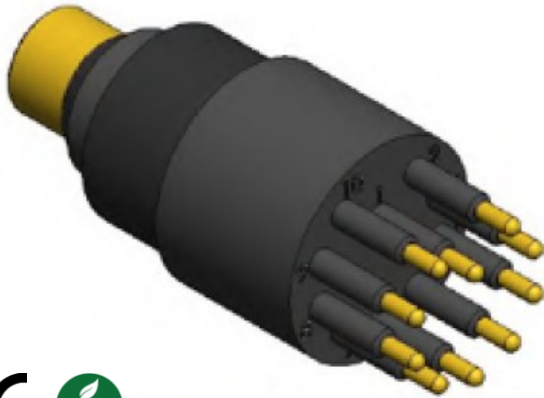


Wiring Color Code

- 1 Black 4 Green 7 White/black
- 2 White 5 Orange 8 Red/black
- 3 Red 6 Blue

(3 Conductor code: 1 Black, 2 White, 3 Green)

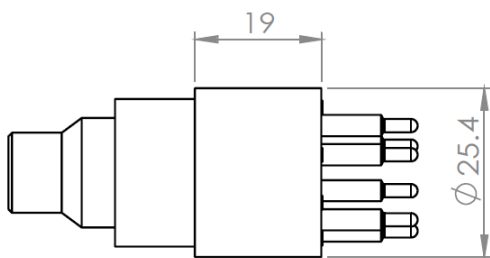
10, 12, 16 Contacts



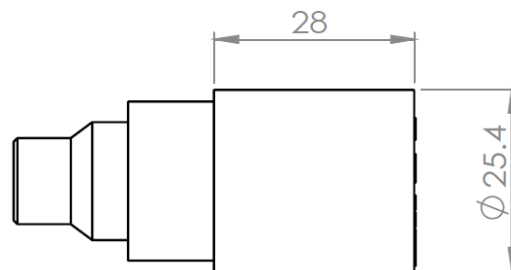
Operation Specification	
Max. voltage	300 V DC
Current rating @contact	5A
Max. current @connector	30A
Insulation resistance	>200 Mohm
Contact resistance	<0.01 ohm
Depth rating	600 bar
Temperature rating	-40 to 60°C

Material Specification	
Connector body	Chloroprene rubber
OM body	Contact 10,12,16: Brass(BR)
Contact	Gold plated brass
Socket	Gold plated Beryllium copper
OM leads	AWG 20 PTFE, 10cm

Dimensions are in millimeters; Threads are in inches



Male



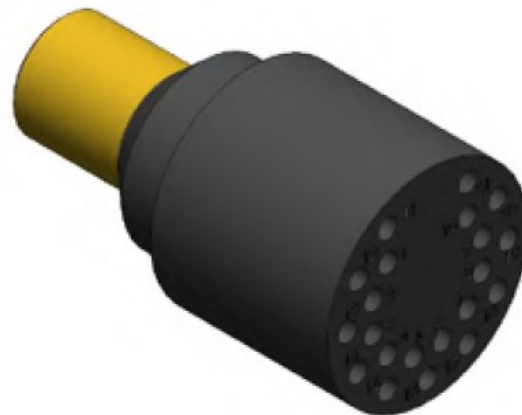
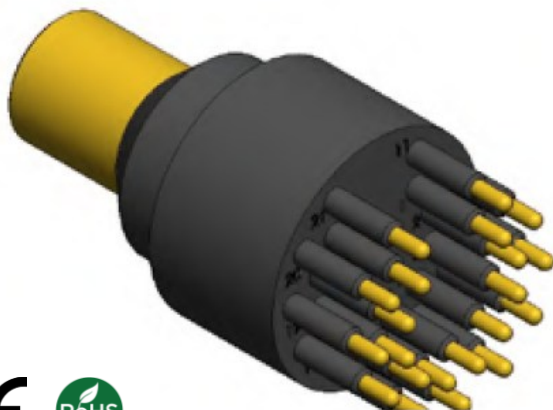
Female



Wiring Color Code

- 1 Black
- 2 White
- 3 Red
- 4 Green
- 5 Orange
- 6 Blue
- 7 White/black
- 8 Red/black
- 9 Green/black
- 10 Orange/black
- 11 Blue/black
- 12 Black/white
- 13 Red/white
- 14 Green/white
- 15 Blue/white
- 16 Black/red

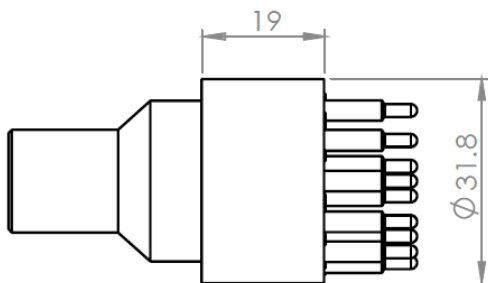
21 Contacts



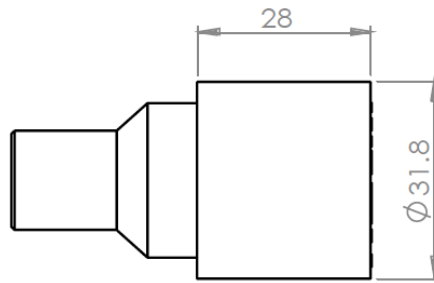
Operation Specification	
Max. voltage	300 V DC
Current rating @contact	5A
Max. current @connector	40A
Insulation resistance	>200 Mohm
Contact resistance	<0.01 ohm
Depth rating	600 bar
Temperature rating	-40 to 60°C

Material Specification	
Connector body	Chloroprene rubber
OM body	Brass
Contact	Gold plated brass
Socket	Gold plated Beryllium copper
OM leads	20 AWG PTFE, 10cm

Dimensions are in millimeters; Threads are in inches



Male



Female

