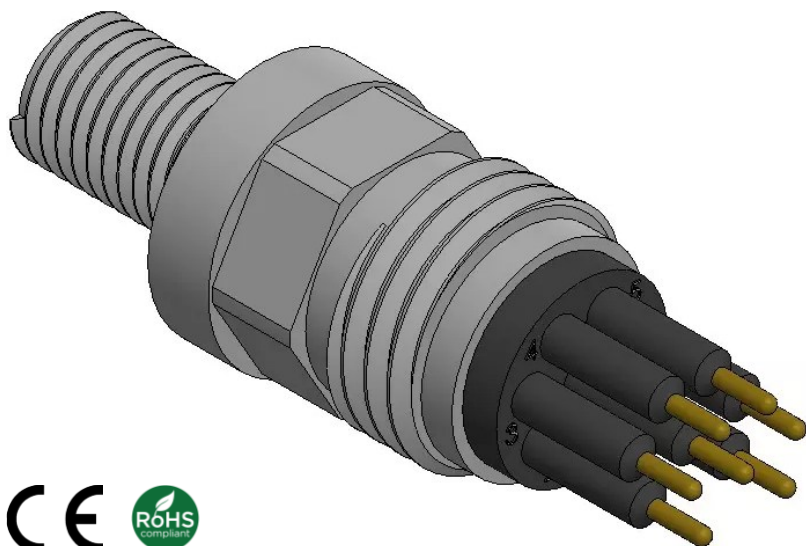
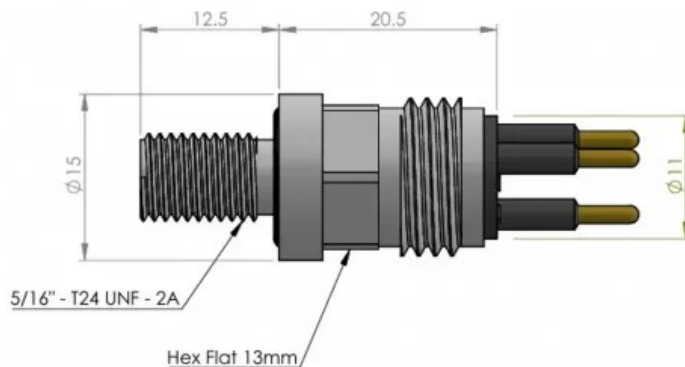


Tiny Bulkhead Wet-Mate Underwater Connector (Male)



Dimensions are in millimeters; Threads are in inches



Operation Specification	
Max. voltage	300 V DC
Max. current @connector	Contact 4: 7A
	Contact 7: 4.4A
Insulation resistance	>200 Mohm
Contact resistance	<0.01 ohm
Depth rating	600 bar (300 bar for PEEK)
Temperature rating	-5 to 65°C

Material Specification	
Connector body	Chloroprene rubber
Bulkhead body	stainless steel 316(SS), titanium(TI) or PEEK(PE)
Contact	Gold plated brass
Socket	Gold plated Beryllium copper
Location pin	Contact 4,7: N/A
Bulkhead leads	Contact 4: AWG 20 PTFE, 30cm
	Contact 7: AWG 22 PTFE, 30cm
O - rings	NBR 2-012

Face View (Male)



Wiring Color Code

- 1 Black
- 2 White
- 3 Red
- 4 Green
- 5 Orange
- 6 Blue
- 7 White/black

Note: Cabling, contacts, and connector configuration can be customized per customer specification

Build Your Part Number

Example: **PSE2257C1200**

Series	
PSE225	
Contacts - select one	
4C	4 Contacts
7C	7 Contacts
Cable Length – specify in meters	
XX	Cable length in meters (ex. 1200 meters = 1200)