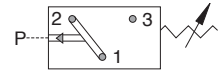


Model	Adjustment Range		Avg. Differential		Repeatability
	PSI	Bar	PSI	Bar	
1	250 - 1500	17 - 103	30 - 150	2 - 10	± 35 psi (2.4 bar) + 4% of setting
2	500 - 3500	35 - 240	75 - 350	5 - 24	± 120 psi (8.3 bar) + 6% of setting
3	1000 - 5000	70 - 345	120 - 500	8.5 - 35	± 200 psi (2.4 bar) + 7% of setting



ELECTRICAL:

Standard: 5A, 125V/250VAC - U.L. Recognized*
 5A, 12/24VDC - U.L. Recognized*
 Option -7: 0.02A, 60VDC - U.L. Recognized*
 Gold contacts may be required for less than 12 VDC and 20 milliamps

MANUFACTURER'S OTHER RATING:

5A @ 40VDC

WETTED MATERIAL PISTON SEAL:

Piston Seal: Buna-N (Standard)
 (optional EPDM, VITON®,
 Low Temp Nitrile)

Piston: Steel

Housing: Brass
 (optional - 316 Stainless Steel)
 For Other Materials Consult Factory

PROTECTION:

Exposed Terminals – IP00
 DIN HC - IP65
 Flying Leads, M12, Deutsch Integral,
 Packard - IP69

SWITCH TYPE:

Snap Action

MECHANICAL LIFE:

1,000,000 cycles

MEDIA TEMPERATURE RANGE

(Piston Seal):

Buna – N: -15° to +230°F (-26° to 110°C)
 EPDM: -10° to +250°F (-23° to 121°C)
 VITON®: 0° to +302°F (-18° to 150°C)
 (@ Registered Trademark of DuPont)
 Low Temp Nitrile: -40° to 230°F (-40° to 110°C)

MAXIMUM OVERPRESSURE:

9,000 PSI (620 Bar) - Static
 7,500 PSI (517 Bar) - Dynamic

WEIGHT:

Approx. 0.25 lbs (0.12 kg)

[For Certifications and Approvals: Please Inquire]

ORDERING INFORMATION

PBPA	- * 2	- * R	- 4M	- C	- H	- * 1
Model	Set Point	Direction	Port Size	Circuit	Terminal	Options
PBPA Field Adjustable	See Above Adjustment Ranges	R - PSI Rising F - PSI Falling BR - Bar Rising BF - Bar Falling	2M - 1/8 NPT 4M - 1/4 NPT 2G - 1/8 BSPP 4G - 1/4 BSPP (undercut for an o-ring seal)	A - SPST / NO B - SPST / NC C - SPDT	SP - 1/4" x 1/32" Spade TS - 6-32 Terminal Screws FL - 18" Flying Leads (Standard) FLL - Specify Wire Length H - DIN 43650A Male Half Only HC - DIN 43650A Cable Clamp HN - DIN 43650A 1/2 Conduit (female) HCC - XXX (Specify Length in Inches) DI - Deutsch Integral M12 - M12 X 1 PP - Packard Connector	* - Omit If Standard 1 - VITON® Seal 2 - EPDM Seal 15 - Low Temp Nitrile Seal 4 - 316 SS Housing (Extended Lead time from standard brass) 5 - Spiral Restrictor 7 - Gold Contacts 16 - Thread Sealant (Taper Threads Only)
PBPF Factory Set	*Model PBPF Specify Set Point Required	*Omit For Model PBPA	4GS- 1/4 BSPP (no undercut) 4S - 7/16X20 SAE MALE 6S - 9/16X18 SAE MALE M10 - M10X1* M12 - M12X1.5 *			
			*Consult Factory for Specials.		* See Page 49 for other electrical termination options	