

Paddle Wheel

- Available with weldable insert for installation into pre-existing piping schemes
- Available with ANSI flanges and NPT threaded connections
- 4–20mA outputs for both flow and temperature
- Pulse output for flow
- 2 switching relays (PNP or NPN) for flow and / or temperature
- Accuracy: 2% of full span
- Wetted sensor easily removable for maintenance



About

The P75 Paddle Wheel Flow Meter is high-pressure resistant and industrially designed to provide accurate flow and temperature measurement. It supports pipe size ranges from $\frac{3}{4}$ " to 6". This product features a durable stainless-steel construction and offers output signals in 4...20mA, pulse, and PNP/NPN switching. The P75 can be delivered complete with inlet and outlet flow ports or as stand-alone with a weldable insert.

Applications

- ✓ Hydraulic Oil and Lubricating Systems
- ✓ Water And Wastewater Treatment
- ✓ Cooling Systems for Industrial Equipment
- ✓ Braking Fluid Measurement
- ✓ Oil and Gas Flow Monitoring
- ✓ Machine Manufacturing Process Control
- ✓ More

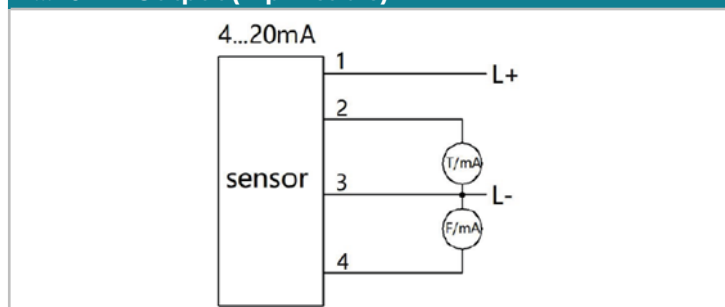
Series P75

Flow Rates

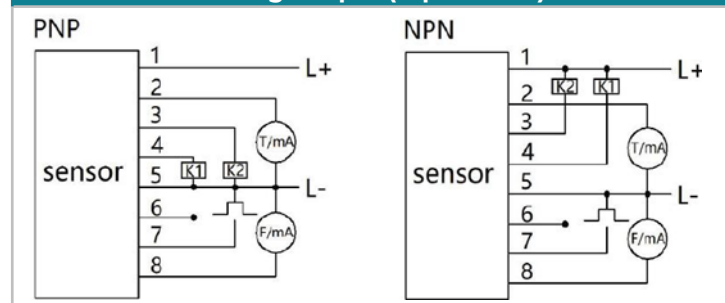
Application Pipe Size & Flow Rates

Pipe Size	Flow Ranges	
	Gallons / minute	Liters / minute
Inch		
¾	2.7...30	10...114
1	4.3...46	16...176
1 ¼	9...100	34...379
1 ½	10...120	40...452
2	17...186	63...706
2 ½	28...315	107...1194
3	43...480	163...1809
4	68...750	254...2827
6	15...1700	572...6361

Output Signals & Pin Out

4...20mA Output (4-pin cable)


Pin	Cable Color	Description
1	Brown	Power +
2	White	Temperature Output: 4...20mA
3	Blue	Power -
4	Black	Flow Output: 4...20mA

4...20mA + Switching Output (8-pin cable)


Pin	Cable Color	Description
1	Brown	Power +
2	Gray	Temperature Output: 4...20mA
3	White	K2: Switching Output 2
4	Pink	K1: Switching Output 1
5	Blue	Power -
6	Red	/
7	Yellow	Flow Output: 4...20mA
8	Green	Flow Output: Pulse

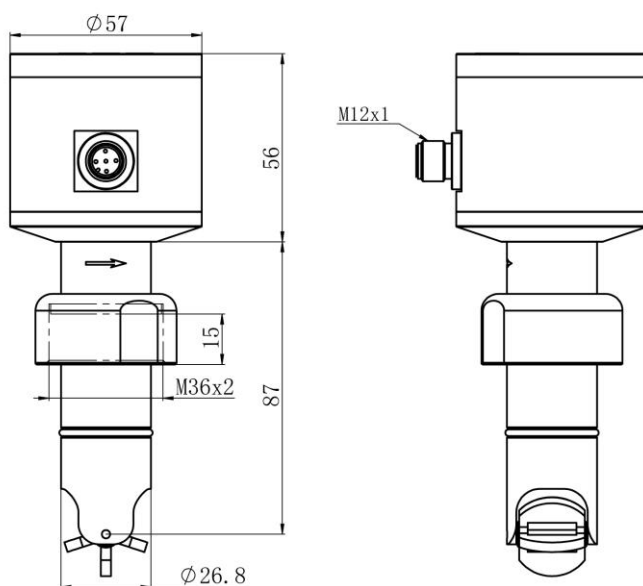
Series P75

Process Connections

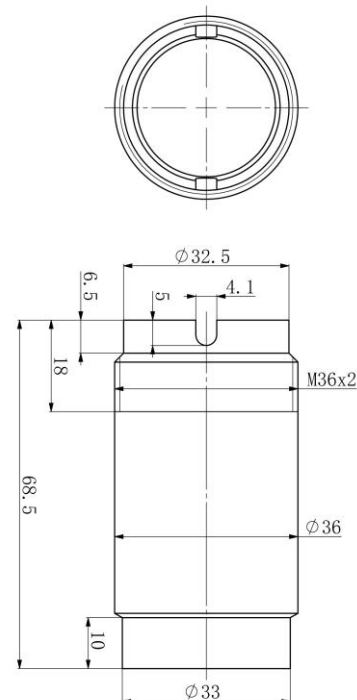
M36 X 2 Threaded Housing Connection with Weldable Hub

(recommended for installation into T fitting or pipe sizes 2, 2 ½", 3", 4")

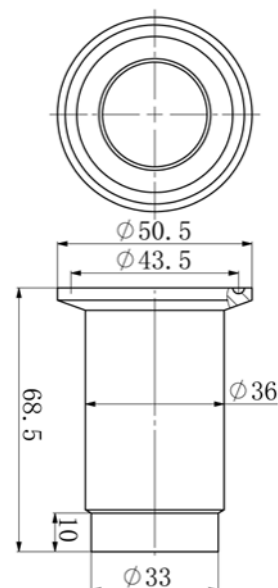
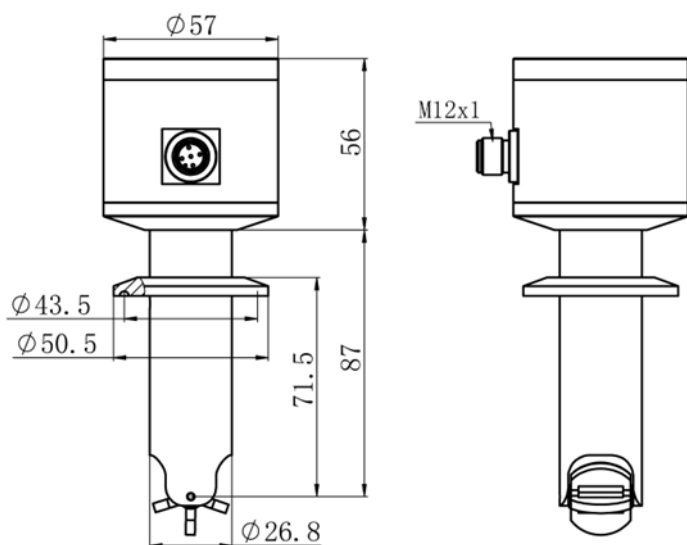
M36 x 2 Thread



M36 x 2 Weldable Hub

**1.5" Tri-Clamp Housing Connection with Weldable Hub**

(recommended for installation into T fitting or pipe sizes 2, 2 ½", 3", 4")

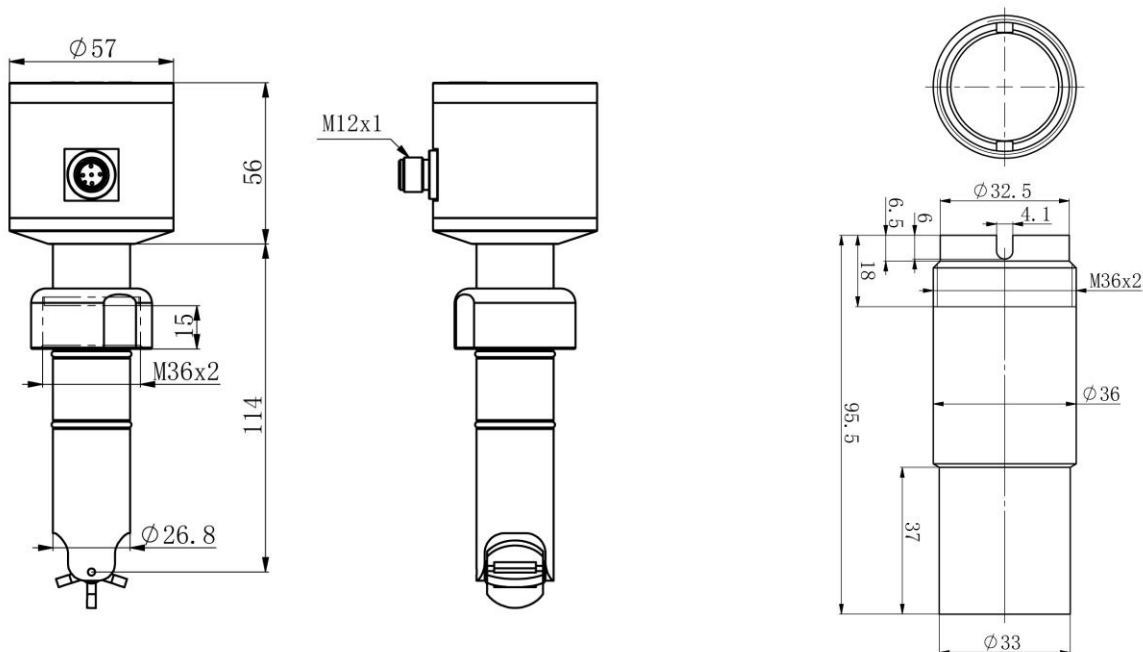


Series P75

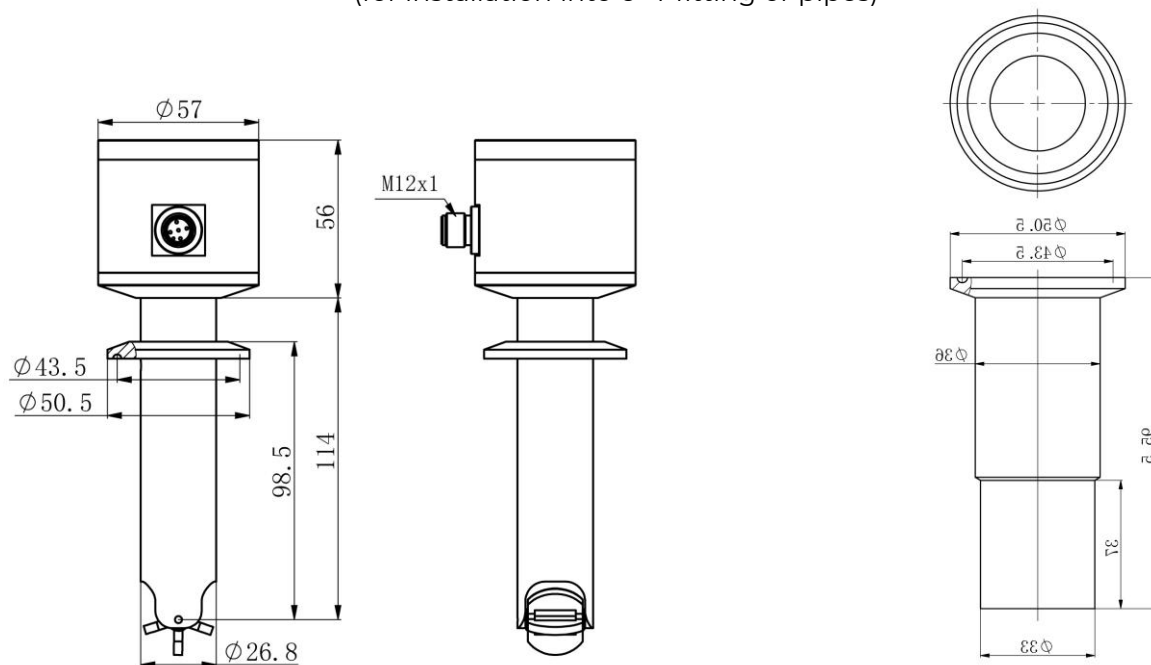
Process Connections

M36 X 2 Threaded Housing Connection with Weldable Hub

(for installation into 6" T fitting or pipes)

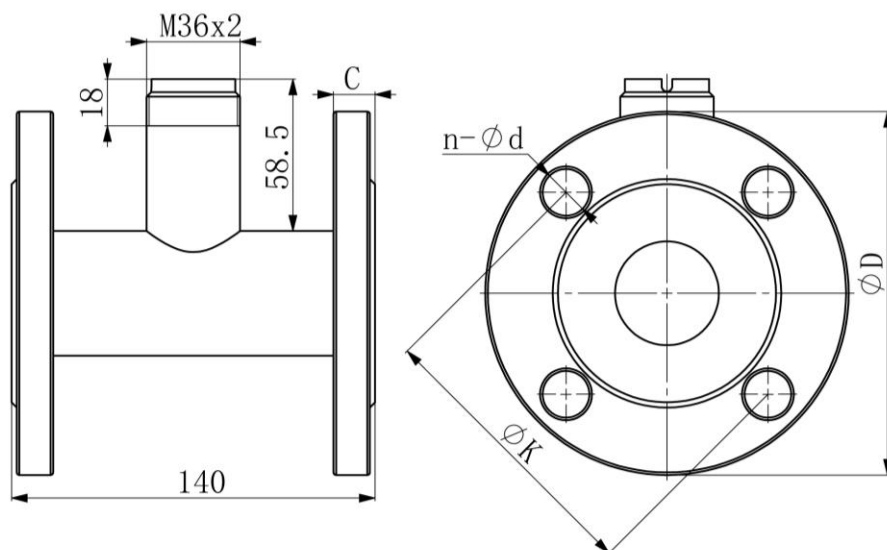
**1.5" Tri-Clamp Housing Connection with Weldable Hub**

(for installation into 6" T fitting or pipes)



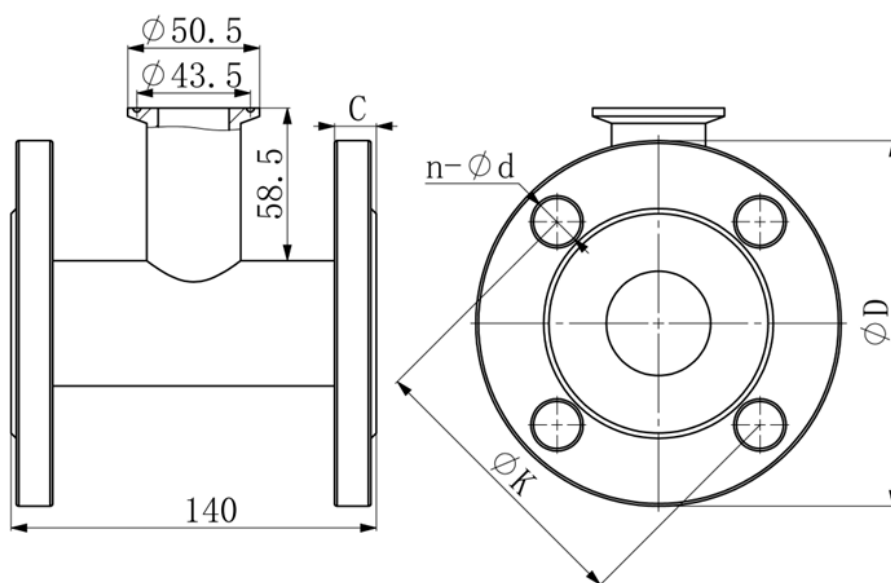
Process Connections (con't)

M36 X 2 Threaded Housing Connection - ANSI T Flanges Class 150, ASME B16.5


Flange (ANSI CLASS 150)

Inch	D	K	C	n - Ø d
¾	100	70	13	4 - Ø 16
1	110	79.5	14.5	4 - Ø 16
1 ¼	120	89	16	4 - Ø 16
1 ½	130	98.5	17.5	4 - Ø 16
2	150	120.5	19.5	4 - Ø 18
2 ½	180	139.5	22.5	4 - Ø 18
3	190	152.5	24	4 - Ø 18
4	230	190.5	24	8 - Ø 18
6	280	241.5	25.5	8 - Ø 22

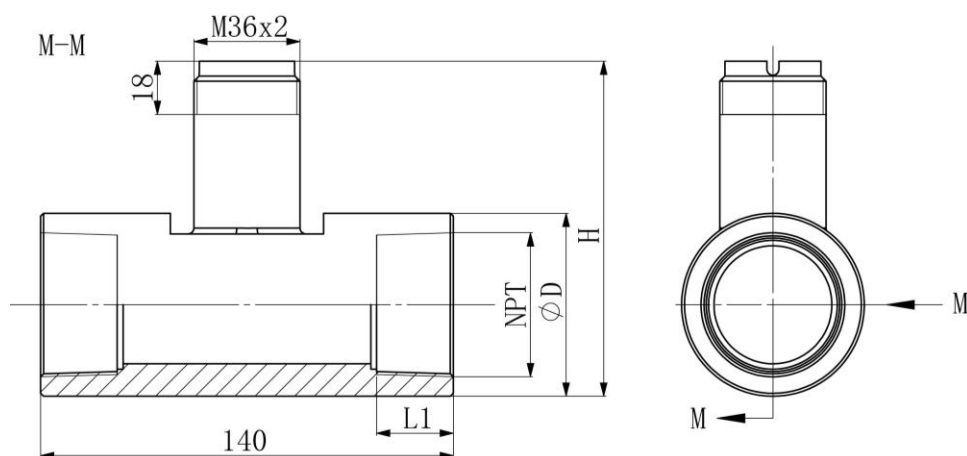
1.5" Tri-Clamp Housing Connection - ANSI T Flanges Class 150, ASME B16.5


Flange (ANSI CLASS 150)

Inch	D	K	C	n - Ø d
¾	100	70	13	4 - Ø 16
1	110	79.5	14.5	4 - Ø 16
1 ¼	120	89	16	4 - Ø 16
1 ½	130	98.5	17.5	4 - Ø 16
2	150	120.5	19.5	4 - Ø 18
2 ½	180	139.5	22.5	4 - Ø 18
3	190	152.5	24	4 - Ø 18
4	230	190.5	24	8 - Ø 18
6	280	241.5	25.5	8 - Ø 22

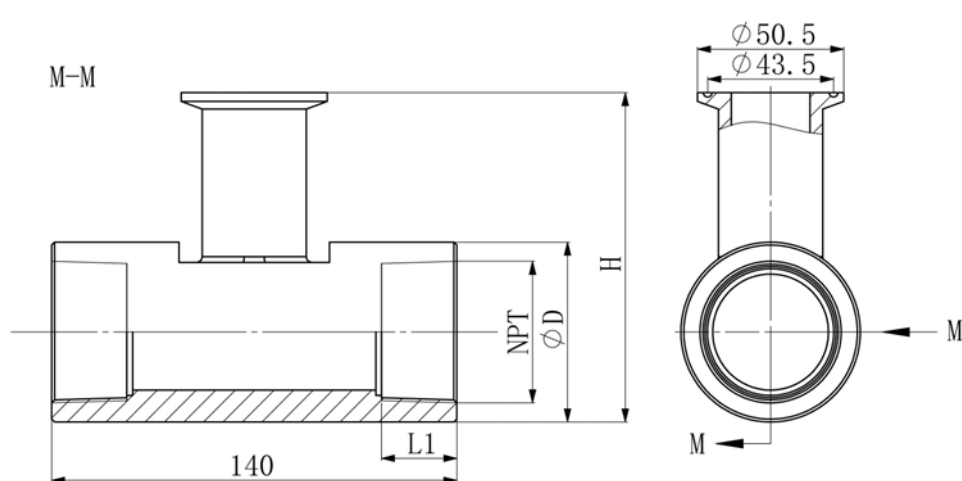
Process Connections (con't)

M36 X 2 Threaded Housing Connection – T Fitting with NPT Female Threads


T Fitting with NPT threads

Inch	D	H	L1
¾	46	97	17
1	50	102	19
1 ¼	55	108	22
1 ½	62	115	26

1.5" Tri-Clamp Housing Connection - T Fitting with NPT Female Threads


T Fitting with NPT threads

Inch	D	H	L1
¾	46	97	17
1	50	102	19
1 ¼	55	108	22
1 ½	62	115	26

Build Your Part Number

Series P75

Example: P755AA

Series

P75

Process Connection - select one

With Weldable Hub

4A	M36 x 2 threaded with weldable hub for T fitting or pipe sizes 2", 2 ½", 3" 4" (see page 3)
4B	1.5" Tri-Clamp with weldable hub T fitting or pipe sizes 2", 2 ½", 3" 4" (see page 3)
5A	M36 x 2 threaded with weldable hub for 6" T fitting or pipes (see page 4)
5B	1.5" Tri-Clamp with weldable hub for 6" T fitting or pipes (see page 4)

M36 X 2 Threaded Housing Connection with ANSI Flange Class 150, ASME B16.5

5C	¾" ANSI flange with M36 X 2 housing connection (see page 4)
5D	1" ANSI flange with M36 X 2 housing connection (see page 4)
5E	1 ¼" ANSI flange with M36 X 2 housing connection (see page 4)
5F	1 ½" ANSI flange with M36 X 2 housing connection (see page 4)
5G	2" ANSI flange with M36 X 2 housing connection (see page 4)
5H	2 ½" ANSI flange with M36 X 2 housing connection (see page 4)
5J	3" ANSI flange with M36 X 2 housing connection (see page 4)
5K	4" ANSI flange with M36 X 2 housing connection (see page 4)
5L	6" ANSI flange with M36 X 2 housing connection (see page 4)

1 ½" Tri-Clamp Housing Connection with ANSI Flange Class 150, ASME B16.5

5M	¾" ANSI flange with 1.5" Tri-Clamp sensor connection (see page 4)
5N	1" ANSI flange with 1.5" Tri-Clamp sensor connection (see page 4)
5P	1 ¼" ANSI flange with 1.5" Tri-Clamp sensor connection (see page 4)
5Q	1 ½" ANSI flange with 1.5" Tri-Clamp sensor connection (see page 4)
5R	2" ANSI flange with 1.5" Tri-Clamp sensor connection (see page 4)
5S	2 ½" ANSI flange with 1.5" Tri-Clamp sensor connection (see page 4)
5T	3" ANSI flange with 1.5" Tri-Clamp sensor connection (see page 4)
5U	4" ANSI flange with 1.5" Tri-Clamp sensor connection (see page 4)
5V	6" ANSI flange with 1.5" Tri-Clamp sensor connection (see page 4)

M36 X 2 Threaded Housing Connection with NPT Female T Fitting

5W	¾" NPT female with M36 X 2 sensor connection (see page 5)
5X	1" NPT female with M36 X 2 sensor connection (see page 5)
5Y	1 ¼" NPT female with M36 X 2 sensor connection (see page 5)
5Z	1 ½" NPT female with M36 X 2 sensor connection (see page 5)

1 ½" Tri-Clamp Housing Connection with NPT Female T Fitting

6A	¾" NPT female with 1.5" Tri-Clamp sensor connection (see page 5)
6B	1" NPT female with 1.5" Tri-Clamp sensor connection (see page 5)
6C	1 ¼" NPT female with 1.5" Tri-Clamp sensor connection (see page 5)
6D	1 ½" NPT female with 1.5" Tri-Clamp sensor connection (see page 5)

Build Your Part Number

Series P75
Example: P755AB
Example: PSE35

Continued...

	Output Signals - select one (see diagrams page 2)	Supply
A	4 ... 20 mA flow output + 4 ... 20 mA temperature output	24 (19.5...28.5) VDC
B	4 ... 20 mA flow output + 4...20mA temperature output + pulse flow output + 2 X PNP switching relays Note: Relays are user programmable and can be set for flow, temperature or one of each	24 (19.5...28.5) VDC
C	4 ... 20 mA flow output + 4...20mA temperature output + pulse flow output + 2 X NPN switching relays Note: Relays are user programmable and can be set for flow, temperature or one of each	24 (19.5...28.5) VDC

Mating Electrical Connection Assembly - optional; will be quoted as a separate line item

Part#	
PSE1	M12x1, 5 pole - straight with cable gland (field wireable)
PSE2	M12x1, 5 pole - straight with 1 meter PUR cable
PSE3	M12x1, 5 pole - straight with 3 meter PUR cable
PSE29	M12x1, 5 pole - straight with 5 meter PUR shielded cable
PSE30	M12x1, 5 pole - straight with 10 meter PUR shielded cable
PSE31	M12x1, 8 pole - M12x1, 8 pole - straight with cable gland (field wireable)
PSE32	M12x1, 8 pole - straight with 1 meter PUR cable
PSE33	M12x1, 8 pole - straight with 3 meter PUR cable
PSE34	M12x1, 8 pole - straight with 5 meter PUR cable
PSE35	M12x1, 8 pole - straight with 10 meter PUR cable

Technical Parameters

Technical Parameters		
Measuring	Flow Measuring Ranges	See below table for references
	Temperature Measuring Range	32...212°F (0...100°C)
	Applicable to Pipe Size	¾", 1", 1 ¼", 1 ½", 2", 2 ½", 3", 4", 6" (DN20, 25, 32, 40, 50, 65, 80, 100, 150)
	Accuracy	2% of full span
Electrical	Outputs	1 X 4...20mA flow 1 X 4...20mA temperature 1 X Pulse output flow 2 X switching outputs (NPN or PNP) Note: Relays are user programmable and can be set for flow, temperature or one of each
	Operating Voltage	24VDC ± 20%
	Operating Current	<50mA
	Electrical Connections	M12x1, 8 - pole
		M12x1, 4 - pole
Environmental	Maximum Pressure Resistance	435 psi (30 bar)
	Ambient Temperature	-20...80°C (-4...176°F)
	Protection Class	IP65
Materials	Housing	Aluminum
	Body	Stainless Steel
	Rotor	PVDF
	Display	LCD
	Process Connection Options	Thread, Tri-Clamp



Paquin Sensors' product portfolio is designed to provide options to fit the most diverse range of specifications.

We collaborate with our customers to match the best product technologies with your unique application requirements.

Please [contact us](#) or call +1 (800) 831-8217 anytime to discuss your needs!