

Hydraulics Pressure Transmitter

- All-stainless steel (316L) welded isolation diaphragm with no o-ring seals
- Wide pressure range from vacuum up to 8500 PSI
- Output accuracy options $\pm 0.5\%$ & $0.25\%FS$
- Resistant to vibration (20g, 25Hz–2kHz) and mechanical shock (20g/1ms)
- Compact & lightweight for deployment into confined spaces



About

The P411 is a compact and durable pressure transmitter designed specifically for use in hydraulics and similar demanding environments. It utilizes a diffused silicon sensor and an integrated circuit to provide a reliable 4–20mA current output, ideal for remote transmission and direct PLC or instrument interface. Its all-316L stainless steel sealed construction provides corrosion resistance, while its strong shock and vibration resistance ensures stable performance in high-impact settings. The transmitter supports gauge, absolute, and sealed gauge pressure references, making it versatile for a wide range of pressure monitoring tasks.

Applications

- ✓ Mobile Hydraulic Equipment
- ✓ Stationary Hydraulic Equipment
- ✓ Industrial Automation & Control Systems
- ✓ Aerospace & Defense Equipment
- ✓ Automotive Systems
- ✓ Medical Instrumentation
- ✓ More

Build Your Part Number

Series P411

Example: P411GCS37-PSE16

Series

P411

Pressure Reference - select one (please refer to options within pressure range chart below)

G	Gauge
A	Absolute pressure
S	Sealed gauge pressure

Output Signal - select one

A	4 ... 20 mA
B	0 ... 5 VDC
E	1...5 VDC
C	0 ... 10 VDC
G	1...10 VDC
D	0.5 ... 4.5 VDC ratiometric
H	0.5 ... 4.5 VDC non-ratiometric

Supply

24 (12... 36) VDC
24 (12 ... 36) VDC
24 (12 ... 36) VDC
24 (12 ... 36) VDC
24 (12 ... 36) VDC
5 VDC
24 (12 ... 36) VDC

Accuracy Output - select one

S	0.5% FS (standard)
H	0.25% FS

Pressure Range (psi) - select one	Over Pressure (psi)	Burst Pressure (psi)	Pressure Reference
14 -14.5 ... 30	60	150	Gauge
18 0...5	10	25	Gauge
19 0..10	20	50	Gauge
21 0...15	30	75	Gauge
22 0...20	40	100	Gauge
23 0...25	50	125	Gauge
24 0 ... 30	60	150	Gauge or Absolute
25 0 ... 50	100	250	Gauge or Absolute
26 0 ... 100	200	500	Gauge or Absolute
27 0 ... 150	300	750	Gauge or Absolute
28 0 ... 200	400	1000	Gauge or Absolute
29 0 ... 250	500	1250	Sealed
31 0 ... 300	600	1500	Sealed
32 0 ... 400	8000	12000	Sealed
33 0 ... 500	1000	1500	Sealed
34 0 ... 1000	2000	3000	Sealed
35 0 ... 1500	3000	4500	Sealed
36 0 ... 2000	4000	6000	Sealed
37 0 ... 3000	4500	6000	Sealed
38 0 ... 5000	7500	10000	Sealed
39 0 ... 7500	11250	15000	Sealed
85 0 ... 8500	12750	17000	Sealed
XX For custom ranges please inform below part number (Ex: 0...550 psi)			

Build Your Part Number

Series P411

Example: P411GCS37-PSE16

Process Connection – select one; see diagrams page 4

5C	1/4 NPT male
5E	1/2 NPT male
5N	G1/4 male
5Q	G1/2 male

Electrical Connection – select one; see diagrams page 4

6A	DIN 43650-A
6C	M12x1, 4 pole
6E	Deutsch 2-pole, DT04-2P (only available as 4...20mA output)
6F	Deutsch 3-pole, DT04-3P
6G	Deutsch 4-pole, DT04-4P
6H	Packard Metri-Pack

Mating Electrical Connection Assembly – optional; will be quoted as a separate line item

PSE1	M12x1, 5 pole – straight with cable gland (field wireable)
PSE2	M12x1, 5 pole - straight with 1 meter PUR cable
PSE3	M12x1, 5 pole - straight with 3 meter PUR cable
PSE4	M12x1, 5 pole - straight with 1 meter PUR shielded cable
PSE5	M12x1, 5 pole - straight with 3 meter PUR shielded cable
PSE6	M12x1, 5 pole - 90° (field wireable)
PSE7	M12x1, 5 pole - 90° with 1 meter PUR shielded cable
PSE8	M12x1, 5 pole - 90° with 3 meter PUR shielded cable
PSE14	DIN 43650-A with cable gland (field wireable)
PSE15	DIN 43650-A with 1 meter PUR cable
PSE16	DIN 43650-A with 3 meter PUR cable
PSE17	DIN 43650-A with 1 meter PUR shielded cable
PSE18	DIN 43650-A with 3 meter PUR shielded cable
PSE19	DIN 43650-A with 1/2" NPT female thread for conduit entry

Technical Parameters

Technical Parameters

Accuracy	Accuracy	± 0.5% FS typical ± 0.25% FS typical	
	Hysteresis	0.1% FS	
	Repeatability	0.1% FS	
	Response time	≤ 90ms (up to 90% FS)	
	Service life	≥ 10 ⁶ pressure cycles	
Electrical	Output	4 ... 20mA	
	Power supply	12 ... 36 VDC	
	Insulation resistance	≥100MΩ / 250VDC	
	Surge	IEC 61000-4-5 level 1	
	Voltage resistance	500 VAC @ 1 minute	
Environmental	Static electricity	IEC 61000-4-2 level 2	
	Medium temperature	-40...125°C	
	Ambient temperature	-40°C ... 85°C	
	Storage temperature	-40°C ... 125°C	
	Temperature drift	± 1.5% FS (-20°C ... +85°C)	
	Protection	IP65	
	Medium compatibility	All media compatible with stainless steel 316L	
	Vibration resistance	Sine curve	20g, 25Hz ... 2kHz; IEC 60068-2-6
		Random	7.5g, 5Hz ... 1kHz; IEC 60068-2-64
	Shock resistance	Shock	20g / 1ms; IEC 60068-2-27
		Free fall	1m; IEC 60068-2-32
EMC	Immunity	IEC 61000-6-2	
	Radiation	IEC 61000-6-3	
Mechanical	Hex nut	HEX27	
	Net weight	130g ± 20g	

Applications

Cavitation, liquid hammer and pressure peak may occur in air or fluid systems with varying flow rates, such as the rapid closing of the valve or the start and stop of the pump. Even at relatively low operating pressures, these problems may occur at the entrance and exit.

Medium Condition

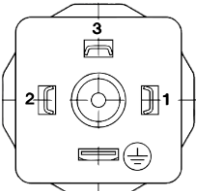
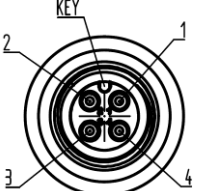
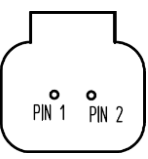
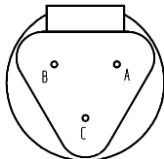
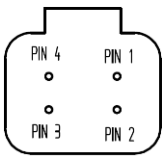
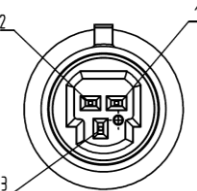
In liquid containing particles, pressure port clogging may occur. The vertical mounting of the pressure transmitter (6 O'clock) minimizes the risk of clogging because the flow of fluid is limited to the initial start-up while the volume behind the nozzle is fixed and the nozzle aperture is relatively large (1.2mm).

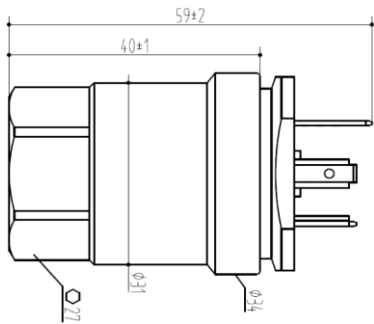
Notes

- 1) Do not touch the diaphragm with hard objects, which may cause damage to the diaphragm.
- 2) Please read the Instruction Manual of the product carefully before installation and check the relevant information of the product.
- 3) Strictly follow the wiring method for wiring, otherwise it may cause product damage or other potential faults.
- 4) Misuse of the product may cause danger or personal injury.

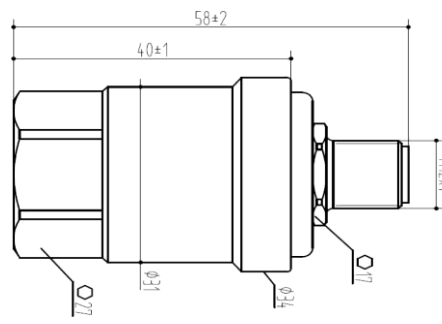
Electrical Connections

Protection / Electrical Connection

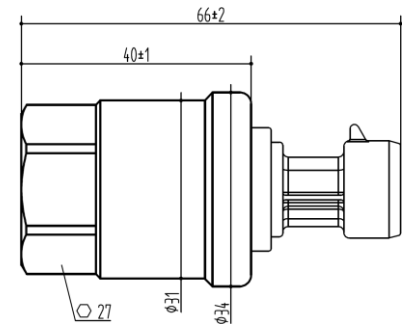
Connector	DIN43650-A	M12x1, 4 pole	DT04, 2 pole	DT04, 3 pole	DT04, 4 pole	Packard Metri-Pack
Code	6A	6C	6E	6F	6G	6H
Dimensions						
Protection	IP65	IP65	IP67	IP67	IP67	IP67
Connection Mode Current (2 Wires)	Pin 1: Supply + Pin 2: Output	Pin 1: Supply + Pin 2: Output	Pin 1: Supply + Pin 2: Output	Pin A: Supply + Pin B: Output	Pin 1: Output Pin 2: Supply +	Pin 1: Supply + Pin 2: Output
Connection Mode Voltage (3 Wires)	Pin 1: Supply + Pin 2: Common - Pin 3: Output	Pin 1: Supply + Pin 2: Common - Pin 3: Output	Not Available	Pin A: Supply + Pin B: Common - Pin C: Output	Pin 1: Common - Pin 2: Supply + Pin 4: Output	Pin 1: Supply + Pin 2: Common - Pin 3: Output



DIN 43650-A



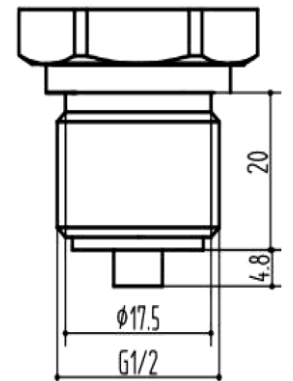
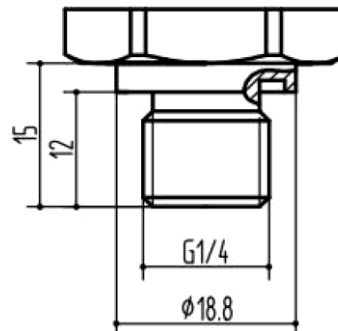
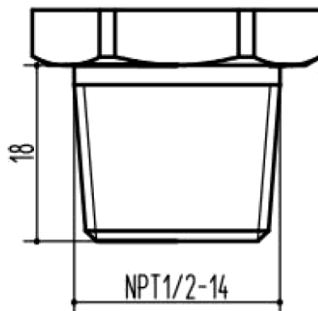
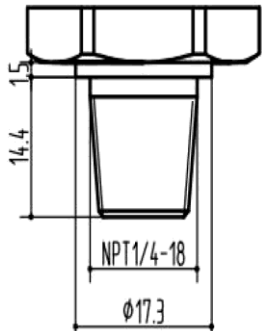
M12 x 1



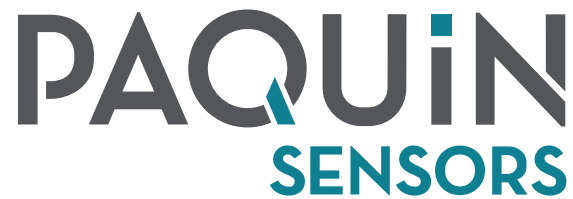
Packard

Process Ports

Recommended Torque: 15 ... 25 Nm



Additional Information



Paquin Sensors' product portfolio is designed to provide options to fit the most diverse range of specifications.

We collaborate with our customers to match the best product technologies with your unique application requirements.

Please [contact us](#) or call +1 (800) 831-8217 anytime to discuss your needs!