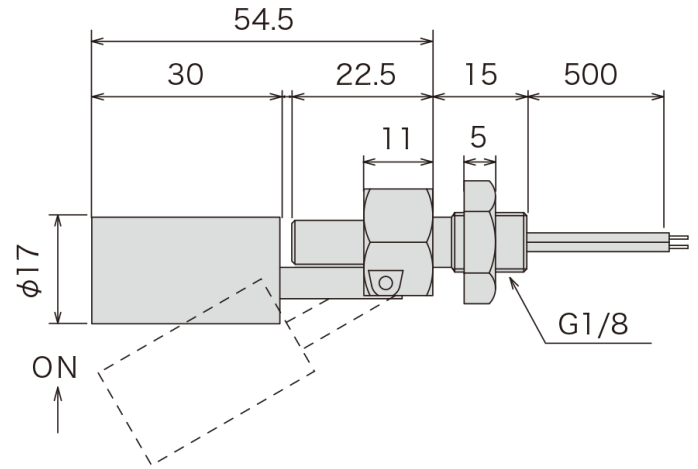
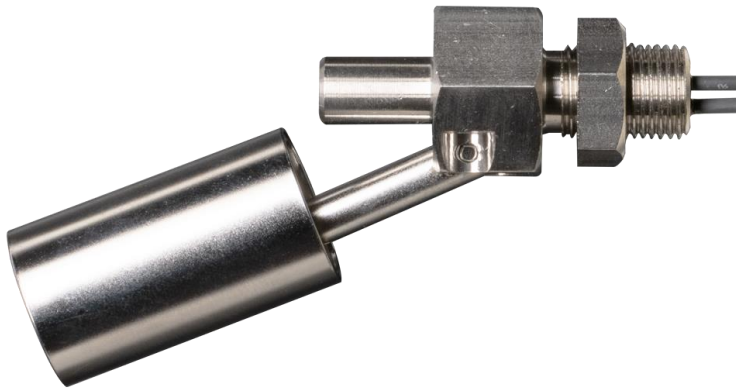


# Overview



## Description

The P295 is a compact, side-mounted float-type level switch designed for precise liquid level detection in various industrial applications. Its stainless-steel construction ensures durability and compatibility with water, oil, and chemical environments.

## Technical Parameters

<b>Material</b>	Stem	SUS304
	Float	SUS304
	Stopper	SUS304
	Nat	SUS304
<b>Specifications</b>	Temperature Range (Atmospheric)	-40°C~+120°C
	Pressure Resistance (Room Temperature)	0.5MPa
	Float Specific Gravity	0.8±0.05
<b>Electric Specs</b>	Maximum Contact Capacity	1W DC/AC
	Maximum Voltage	24V DC/AC
	Maximum Current	0.1A DC/AC
	Wire Length	300mm Standard (Custom lengths available)