

High Temperature Transmitter

- Up to 660°F media temperature
- SS316L wetted parts
- Gauge, absolute & sealed gauge
- Numerous output signals
- Optional Ex protection Exia II CT6



About

The P19 pressure transmitter is capable of withstanding system media temperatures up to 660°F while still performing within tolerances. With a wide selection of pressure ports, this versatile product also delivers high vibration and shock performance.

Applications

- ✓ HVAC / Refrigeration
- ✓ Boiler systems
- ✓ Hydraulics
- ✓ Laboratories
- ✓ Water and most other fluids

Build Your Part Number

Series P19

Example: P19G9A185C6B

Series	
P19	

Pressure Reference - select one	
G	Gauge
S	Sealed Gauge
A	Absolute

Media Temperature Range - select one; see diagrams page 4	
9	-22°F ... +302°F (3 cooling fins)
11	-22°F ... +482°F (5 cooling fins)
12	-22°F ... +662°F (7 cooling fins)

Output Signal - select one		Supply
A	4 ... 20 mA	24 (12 ... 30) VDC
W	4 ... 20 mA with Ex safety barrier Exia II CT6	24 (12 ... 30) VDC
B	0 ... 5 VDC	24 (12 ... 30) VDC
C	0 ... 10 VDC	24 (12 ... 30) VDC
D	0.5 ... 4.5 VDC ratiometric	5 VDC
E	1 ... 5 VDC	24 (12 ... 30) VDC
G	1 ... 10 VDC	24 (12 ... 30) VDC

Pressure Range (psi) - select one	Over Pressure (psi)	Burst Pressure (psi)	
18	0 ... 5	7.5	25
19	0 ... 10	15	50
21	0 ... 15	22.5	45
22	0 ... 20	30	60
23	0 ... 25	37.5	75
24	0 ... 30	45	90
25	0 ... 50	75	150
26	0 ... 100	150	300
27	0 ... 150	225	450
28	0 ... 200	300	600
29	0 ... 250	375	750
31	0 ... 300	450	900
32	0 ... 400	600	1200
33	0 ... 500	750	1500
34	0 ... 1000	1500	3000
35	0 ... 1500	2250	4500
36	0 ... 2000	3000	6000
37	0 ... 3000	4500	9000
38	0 ... 5000	7500	15000
39	0 ... 7500	11250	15000
XX	Use "XX" for custom ranges (Ex: 0 ... 550 psi) Please inform range below part number		

Build Your Part Number

Series P19
Example: P19G9A185C6B
Process Connection – select one; see diagrams page 6

5C	1/4" NPT male
5E	1/2" NPT male
5M	G1/8" male
5N	G1/4" male
5Q	G1/2" male

Electrical Connection – select one; see diagrams page 5 for dimensions & pin-out

6B	DIN 43650-A (field wireable mating connector included)
6K	0.5 Meter PVC shielded cable with flying leads
6L	1 Meter PVC shielded cable with flying leads
6M	2 Meter PVC shielded cable with flying leads
6N	3 Meter PVC shielded cable with flying leads
6P	5 Meter PVC shielded cable with flying leads
6Q	7 Meter PVC shielded cable with flying leads
6R	10 Meter PVC shielded cable with flying leads

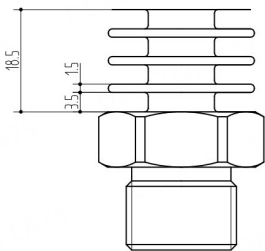
Mating Electrical Connection Assembly – optional; will be quoted as a separate line item

Part#	
PSE14	DIN 43650-A with cable gland (field wireable)
PSE15	DIN 43650-A with 1 meter PUR cable
PSE16	DIN 43650-A with 3 meter PUR cable
PSE17	DIN 43650-A with 1 meter PUR shielded cable
PSE18	DIN 43650-A with 3 meter PUR shielded cable
PSE19	DIN 43650-A with 1/2" NPT female & cable gland (field wireable)

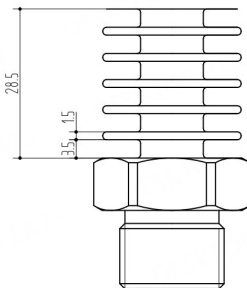
Technical Parameters

Technical Parameters		
Accuracy	At 77°F (+/-9°F)	± 0.5% FS typical
	Hysteresis at 77°F	± 0.1% FS typical
	Repeatability	± 0.1% FS typical
	Response time	≤ 2ms (up to 90% FS)
	Temperature Drift (<5 psig)	± 2% FS typical (0...140°F)
	Temperature Drift (>5 psig)	± 1.5% FS typical (-4...185°F)
Environmental	Media temperature	Refer to temperature ranges page 2
	Ambient temperature	-40 ...+185°F
	Storage temperature	-40 ...+257°F
	Protection	IP65
	Vibration	Sine curve: 20g, 25Hz-2kHz, IEC 600068-2-6 Random: 7.5 grms, 5Hz-1kHz; IEC 60008-2-6
	Shock	200g / 1ms: IEC 60068-2-27 Free fall: 1m, IEC 60068-2-32
	Insulation Resistance	≥100M Ω / 250VDC
	Ex (optional)	Exia II CT6
EMC	Immunity	IEC 61000-6-2 Radiation: IEC 61000-6-3
Mechanical	Wetted parts (sensor)	316L
	Wetted parts (process connection)	316L
	Housing	316L
	Weight	220– 360g

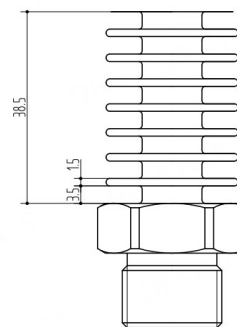
Media Temperature Ranges



Option 9
-22°F ... +302°F

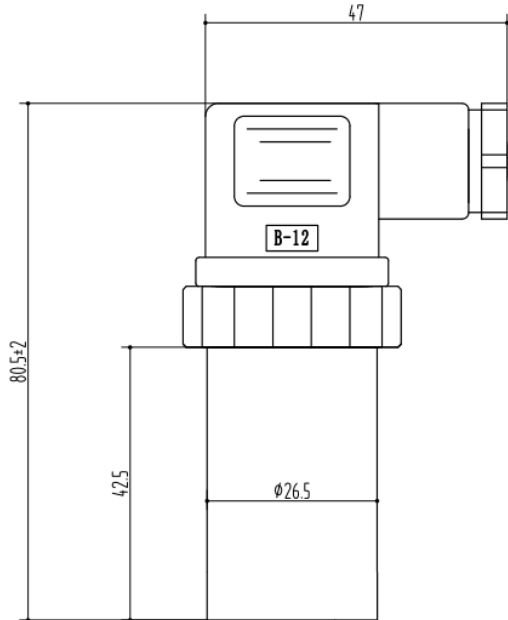


Option 11
-22°F ... +482°F



Option 12
-22°F ... +662°F

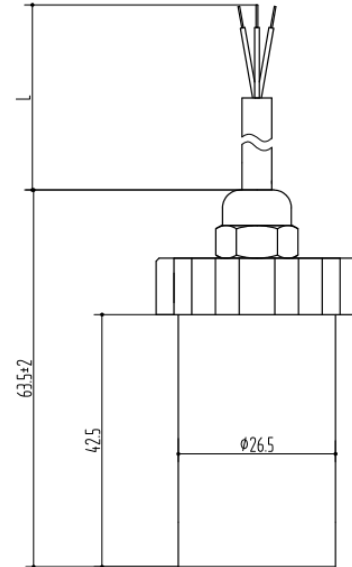
Electrical Connection Dimensions & Pin Out



DIN 43650-A

Milliamp Output
Pin 1: V+ (supply voltage)
Pin 2: → (output signal)

Voltage Outputs
Pin 1: V+ (supply voltage)
Pin 2: GRD (common)
Pin 3: → (output signal)

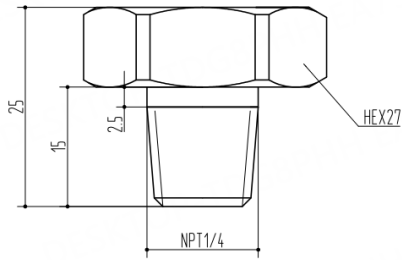


PVC shielded Cable

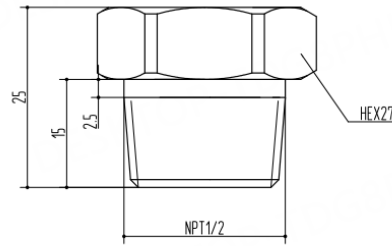
Milliamp Output
Red: V+ (supply voltage)
Green: → (output signal)

Voltage Outputs
Red: V+ (supply voltage)
Green: GRD (common)
Yellow: → (output signal)

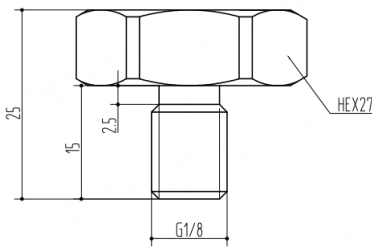
Process Connection Dimensions



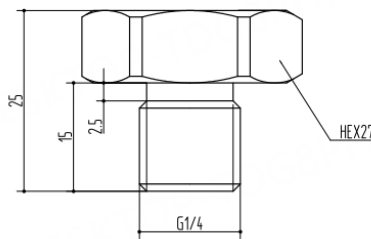
1/4" NPT male



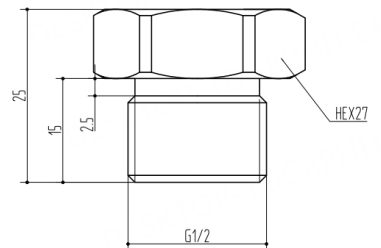
1/2" NPT male



G1/8" male



G1/4" male



G1/2" male

PAQUIN SENSORS

Paquin Sensors' product portfolio is designed to provide options to fit the most diverse range of specifications.

We collaborate with our customers to match the best product technologies with your unique application requirements.

Please [contact us](#) or call +1 (800) 831-8217 anytime to discuss your needs!