

Electronic Level Switch

- Capacitive design
- Submersible design rated for up to 328ft (100m) at 145 PSI (1 MPa)
- Plug-and-play two-wire connection directly to relay or PLC input
- Normally open / Normally closed
- Polypropylene for prevention of corrosion
- Wide temperature range from -4°F to 176°F (-20°C to +80°C)



About

The P108 is designed as a compact submersible level switch offering reliable water level detection in shallow to deep environments. With its rugged plastic housing and protective crown, it ensures durability even at immersion depths up to 328 ft (100 meters). This sensor supports direct two-wire connections to PLCs or relay circuits and requires no calibration or setup, making installation straightforward. It's suitable for a wide range of water solution monitoring applications without compromising safety or signal integrity.

Applications

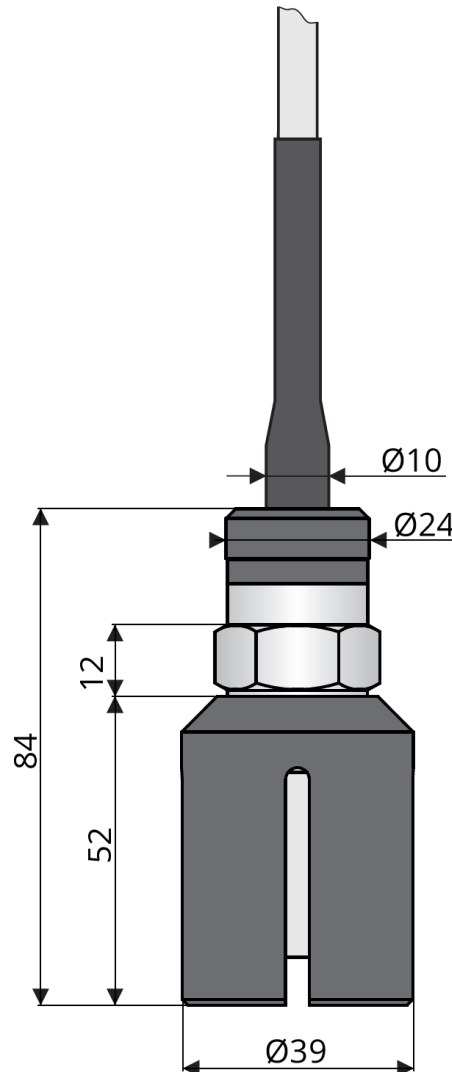
- ✓ Boreholes
- ✓ Wells
- ✓ Sumps
- ✓ Tanks
- ✓ Reservoirs
- ✓ PLC Fluid Control Systems
- ✓ Skid Packages
- ✓ More

Build Your Part Number

Series P108**Example: P108B2E25**

Series	
P108	
Output - select one; output position when not immersed	
A	Normally Open
B	Normally Closed
Process Connection - select one	
2	M18 x 1.5 metric thread
Electrode Length - select one	
E	30mm
Cable Length – please inform in meters	
Cable length in meters (Example: 15 meters = 15)	

Dimensions (mm)



Technical Parameters

Technical Parameters

Electrical	Supply voltage	6 ... 30 VDC
	Switched Current (Off State)	0.6mA Maximum
	Switched Current	3.3mA minimum 40mA maximum
	Remanent Voltage (On State)	6V Maximum
	Output Time Delay	0.1s
Environmental	Ambient Temperature Range	-4° ... +176°F (-20°C ... +80°C)
	Protection Class	IP68
Materials	Housing	Plastic PP
	Protective Crown Material	Plastic PP
	Electrode	Insulated (coated) short bar
	Cable	PVC 2 x 0.75mm
	Weight without cable	~0.44lbs (~0.2kg)

Safety, Protections and Compatibility

The level sensor is equipped with a protection against electric shock on electrode, polarity, overvoltage and short-term current overload on the output.

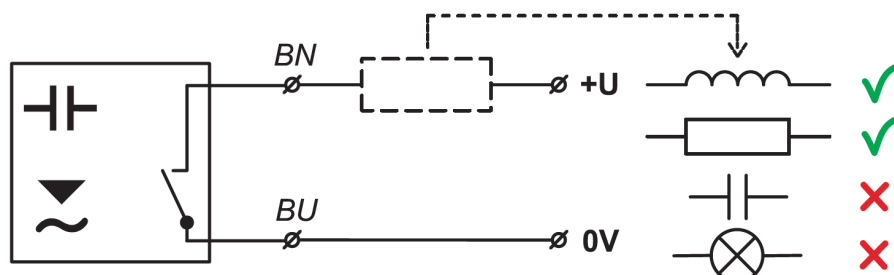
Electromagnetic compatibility is provided by conformity with standards EN 55011 / B, EN 61326-1, EN 61000-4-2 (8 kV), -4-3 (10 V/m), -4-4 (2 kV), -4-5 (1 kV) and -4-6 (10 V).

Installation

Installation of the sensor is done from the top by hanging by the cable. The sensor can operate in any position. The maximum immersion depth is 328 feet (100m). The protective crown prevents pollution and damage of the electrode. It is fixed with thread and can be, if necessary (cleaning, etc.), removed.

Electrical Connection

Positive pole (+ U) of power supply is connected through a load (relay) to brown wire, negative pole (0V) is connected to white wire. The sensor output is protected against short circuit. Capacity loads and loads with low sleep resistance (bulb) evaluates the sensor as a short circuit. In the case of connection to evaluation unit or to binary input of the PLC the load is not applied.

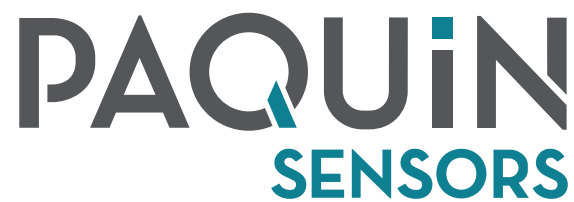


Note: The sensor is equipped with unshielded cable. In the case of strong electromagnetic interference, or parallel lead with power lines, we recommend to use shielded cable or contact the manufacturer. In case of installation in remote locations with a long cable, it is recommended to insert appropriate surge protection to the line

Wiring Colors
 BN = Brown
 BU = Blue

Output

Minimum Level Sensing		Maximum Level Sensing		For security reasons, we recommend to use output option "A" (normally open, sensor closes when immersed) for minimum level detection. Any failure of the sensor or wiring is equally apparent as the emergency level state. For the maximum level detection, we recommend to use option "B" (normally closed, sensor opens when immersed).
Level State	Output State	Level State	Output State	
	Closed		Closed	
	Open		Open	



Paquin Sensors' product portfolio is designed to provide options to fit the most diverse range of specifications.

We collaborate with our customers to match the best product technologies with your unique application requirements.

Please [contact us](#) or call +1 (800) 831-8217 anytime to discuss your needs!