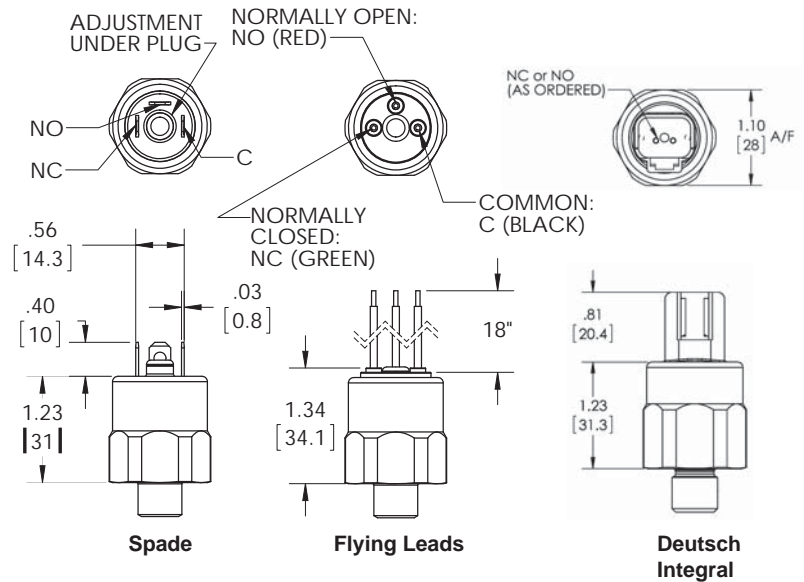
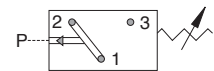


\*

### High Impact Plastic Switch



Model	Adjustment Range		Avg. Differential		Repeatability
	PSI	Bar	PSI	Bar	
1	3 - 20	0.2 - 1.4	2 - 5	0.13 - 0.4	± 0.4 psi (0.03 bar) + 2% of setting
2	15 - 80	1.03 - 6	4 - 7	0.27 - 0.5	± 3 psi (0.14 bar) + 3% of setting
3	50 - 150	3.5 - 10	7 - 15	0.5 - 1.0	± 4 psi (0.3 bar) + 3% of setting



#### ELECTRICAL:

Standard: 5A, 125V/250VAC - U.L. Recognized\*  
 5A, 12/24VDC - U.L. Recognized\*  
 Option -7: 0.02A, 60VDC - U.L. Recognized\*  
 Gold contacts may be required for less than 12 VDC and 20 milliamp

#### MANUFACTURER'S OTHER RATING:

5A @ 40VDC

#### WETTED MATERIAL:

Diaphragm: Buna-N Standard  
 (optional EPDM, KAPTON®, VITON®)  
 Housing: Glass Filled Nylon

#### PROTECTION:

Exposed Terminals – IP00  
 Flying Leads, M12, Deutsch Integral - IP69

#### SWITCH TYPE:

Snap Action

#### MECHANICAL LIFE:

1,000,000 cycles

#### TORQUE SPEC:\*

Use thread sealant tape and hand tighten plus 1-1/2 to 1-3/4 turns

#### MEDIA TEMPERATURE RANGE:

Buna – N: -15° to +230°F (-26° to 110°C)  
 EPDM: -10° to +250°F (-23° to 121°C)  
 KAPTON®: -40° to +239°F (-40° to 115°C)  
 VITON®: 0° to +302°F (-18° to 150°C)  
 (@ Registered Trademark of DuPont)

#### MAXIMUM OVERPRESSURE:

250 PSI (17 Bar)

#### WEIGHT:

0.08 lbs (0.04 kg)

[ For Certifications and Approvals: Please Inquire ]

## ORDERING INFORMATION

HPA	- * 2	- * R	- 4M	- A	- FL	- * 1
Model	Set Point	Direction	Port Size	Circuit	Terminal	Options
HPA - Field Adjustable	See Above Adjustment Ranges	R - PSI Rising F - PSI Falling BR - Bar Rising BF - Bar Falling	2M - 1/8 NPT 4M - 1/4 NPT 2G - 1/8 BSPP 4G - 1/4 BSPP	A - SPST / NO B - SPST / NC C - SPDT	SP - 1/4" x 1/32" Spade TS - 6-32 Terminal Screws FL - 18" Flying Leads FL - Advise additional length of leads if required FLWTF - Weatherpack Tower Female FLWTM - Weatherpack Tower Male FLWSF - Weatherpack Shroud Female FLWSM - Weatherpack Shroud Male DI - Deutsch Integral M12 - M12 X 1 PP - Packard Plug	* - Omit If Standard 1 - VITON® Diaphragm 2 - EPDM Diaphragm 3 - KAPTON® Diaphragm 7 - Gold Contacts
HPF - Factory Set	* Specify Set Point Required for model HPF	*Omit For Model HPA	* See above for Torque Specs			