

# FIA Series

## ▶ FIA-L-08-d0.2-...-C-RL-...

- Visible red laser light
- Class 1 laser product (680 nm, P<0.39 mW)
- Integrated electronics
- Various fork sizes available
- Laser beam typ. Ø 0.2 mm
- Insensitive to dirt accumulation, insensitive to outside light
- Optical long-pass filter
- High switching frequency (typ. 50 kHz)
- Switching state indication (yellow LED)
- Scratch-resistant optics
- Oil-resistant PUR cable (length 500 mm or 1000 mm)
- Sturdy aluminum housing, compact design
- Also available with tool plug (TP, TPO, or TPX)

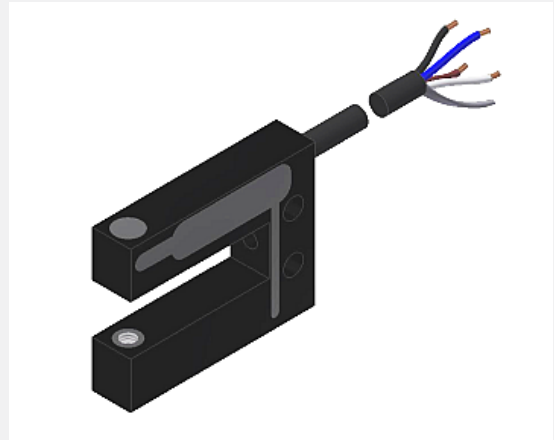


In Proud Partnership with Sensor Instruments

**PAQUIN**  
SENSORS

For technical support, sales, & distribution  
within the USA & Canada

www.paquin.com | (800) 831-8217 | paquinsensors@paquin.com



### Design

#### Product name:

**FIA-L-08-d0.2-(fork size)-C-RL-(length)**

**FIA-L-08-d0.2-(fork size)-C-RL-TP-(length)** (with tool plug TP-M12, s. page 4)

**FIA-L-08-d0.2-(fork size)-C-RL-TPO-(length)** (with tool plug TPO-01, s. page 4)

**FIA-L-08-d0.2-(fork size)-C-RL-TPX-(length)** (with tool plug TPO-03, s. page 4)

#### Laser beam diameter:

**d0.2** (Ø 0.2 mm)

#### Available fork sizes: (cf. dimensions page 3)

**10/15** (fork width A=10 mm, fork depth B=15 mm)

**10/25** (fork width A=10 mm, fork depth B=25 mm)

**10/30** (fork width A=10 mm, fork depth B=30 mm)

**20/15** (fork width A=20 mm, fork depth B=15 mm)

**20/30** (fork width A=20 mm, fork depth B=30 mm)

**25/50** (fork width A=25 mm, fork depth B=50 mm)

**25/80** (fork width A=25 mm, fork depth B=80 mm)

**30/15** (fork width A=30 mm, fork depth B=15 mm)

**30/30** (fork width A=30 mm, fork depth B=30 mm)

**40/30** (fork width A=40 mm, fork depth B=30 mm)

**40/40** (fork width A=40 mm, fork depth B=40 mm)

**40/60** (fork width A=40 mm, fork depth B=60 mm)

**60/60** (fork width A=60 mm, fork depth B=60 mm)

#### Available lengths:

**500** (cable length = 500 mm)

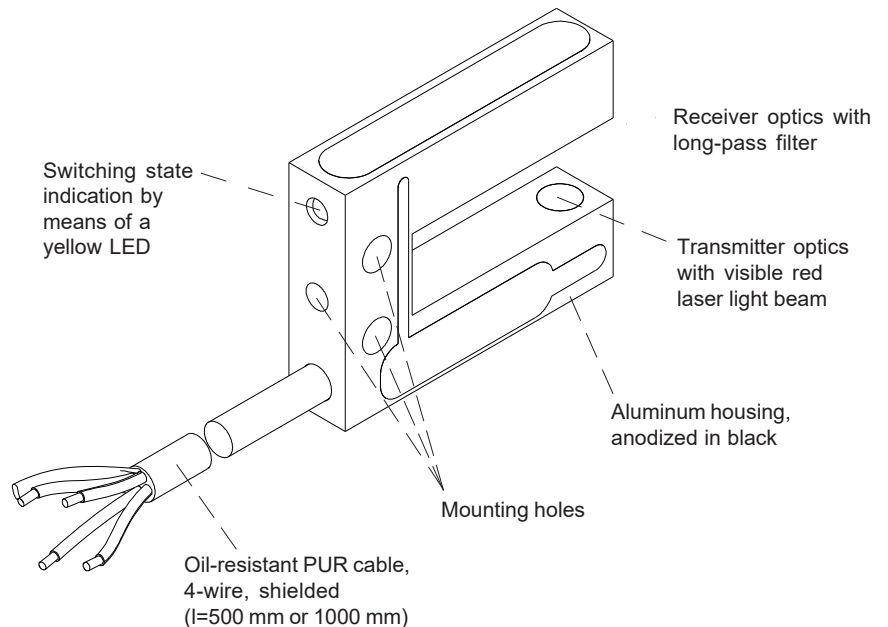
**1000** (cable length = 1000 mm)

#### Available also with tool plug, three variants to choose from: (cf. page 4)

**TP** (tool plug TP-M12 with 4-pole M12 connector, fixed to the sensor cable)


**TPO** (tool plug TPO-01 with 5-pole connector 680, fixed to the sensor cable)

**TPX** (tool plug TPO-03 with 7-pole connector 680, fixed to the sensor cable)





**Technical Data**

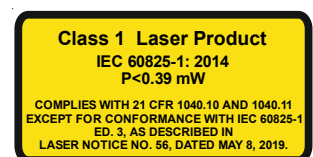
Type	FIA-L-08-d0.2-...-C-RL
Light source	Solid state laser 680 nm, DC operation, 0.39 mW max. opt. power, laser class 1 acc. to DIN EN 60825-1. The use of these laser transmitters therefore requires no additional protective measures.
Laser beam	typ. Ø 0.2 mm
Min. detectable object	typ. 0.2 mm
Reproducibility	typ. 5 µm
Optical filter (receiver side)	long-pass filter
Voltage supply	+24VDC (± 10%), reverse polarity protected
Ambient light	up to 5000 Lux
Current consumption	typ. 20 mA
Aperture size (receiver side)	Circular aperture Ø 0.5 mm
Switching outputs (2x)	Q = pnp bright-switching (pnp n.c.) / npn dark-switching (nnp n.o.) Qinv = pnp dark-switching (pnp n.o.) / npn bright-switching (nnp n.c.) 100mA, short-circuit protection
Enclosure rating	IP67
Operating temperature range	-20°C ... +50°C
Storage temperature range	-20°C ... +85°C
Housing material	Aluminum, anodized in black
Housing dimensions	see page 3
Cable type	Cable integrated in the sensor housing: 4-wire, PUR-sheath, length 500 mm or 1000 mm
EMC test acc. to	DIN EN 60947-5-2 
Switching frequency	typ. 50 kHz
Switching state indicator	by means of a yellow LED integrated in the sensor housing: LED on = sensor free LED off = sensor covered



**Laser Information**

The laser transmitter of FIA-L Series comply with laser class 1 according to EN 60825-1. Under reasonably foreseeable conditions a class 1 laser is safe. The reasonably foreseeable conditions are kept during specified normal operation. The use of these laser transmitters therefore requires no additional protective measures.

The laser transmitter of FIA-L Series are supplied with an information label „CLASS 1 LASER PRODUCT“.

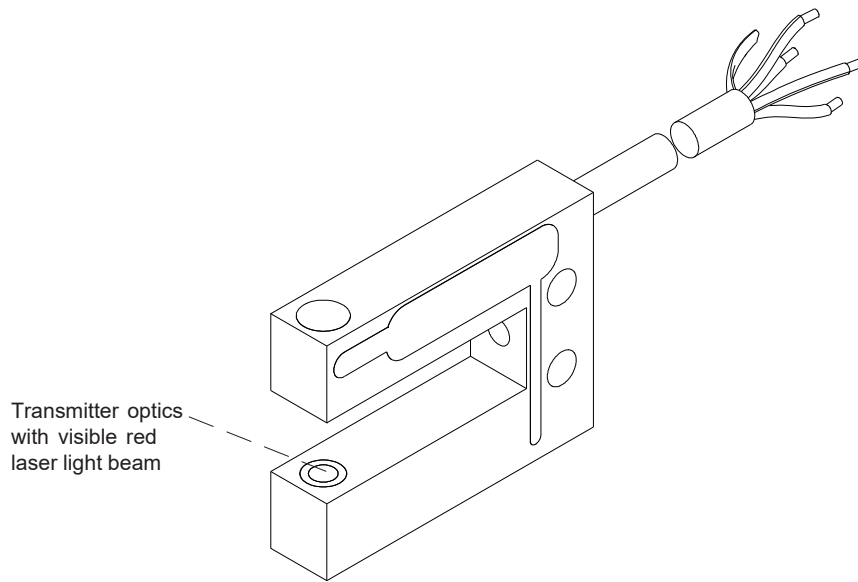
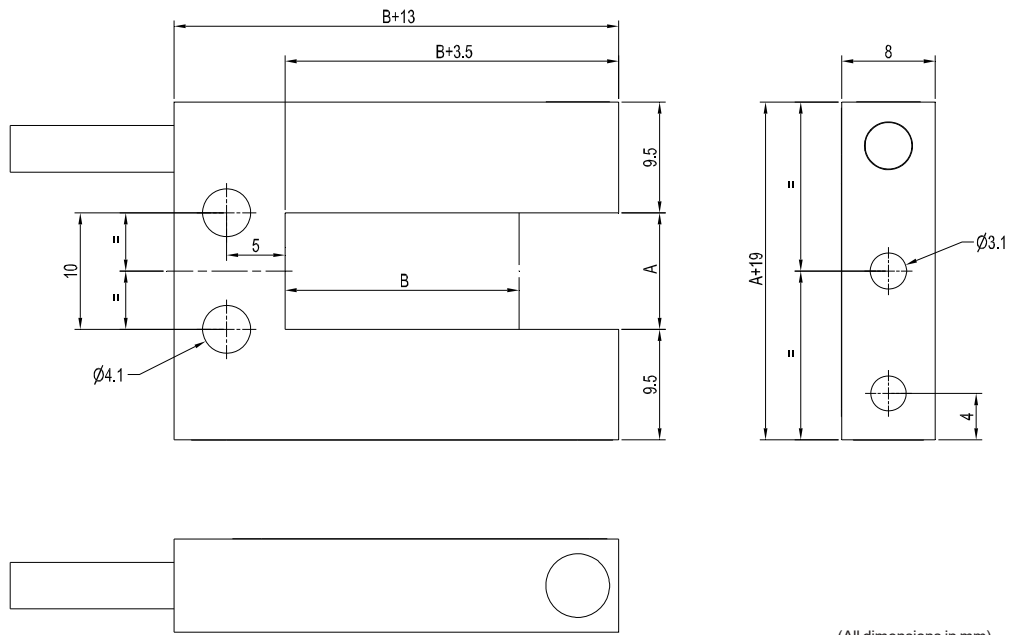




Dimensions

FIA-L-08-d0.2-(fork size)-C-RL-...:

Fork-size	Dim. A	Dim. B
10/15	10 mm	15 mm
10/25	10 mm	25 mm
10/30	10 mm	30 mm
20/15	20 mm	15 mm
20/30	20 mm	30 mm
25/50	25 mm	50 mm
25/80	25 mm	80 mm
30/15	30 mm	15 mm
30/30	30 mm	30 mm
40/30	40 mm	30 mm
40/40	40 mm	40 mm
40/60	40 mm	60 mm
60/60	60 mm	60 mm

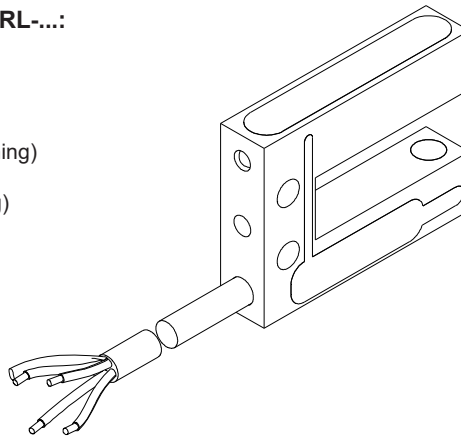




**Connector Assignment**

**Assignment of cable wires of FIA-L-08-d0.2-...-C-RL-...:**  
(4-wire cable, PUR sheath, shielded):

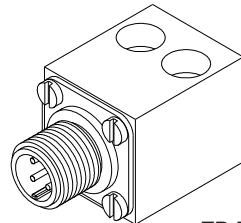
Color:	Assignment:
Brown	+Ub (+24VDC ± 10%)
White	Qinv (pnp dark-switching, npn bright-switching)
Blue	GND (0V)
Black	Q (pnp bright-switching, npn dark-switching)
Shield	Housing



Also available with mounted tool plug, three variants to choose from: "TP", "TPO", or "TPX"

**Connector assignment FIA-L-08-d0.2-...-C-RL-TP-...**  
**with tool plug TP-M12**  
(4-pole connector M12):

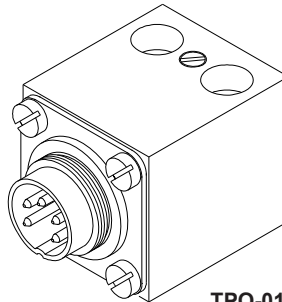
Pin:	Assignment:
1	+Ub (+24VDC ± 10%)
2	Output Qinv
3	GND (0V)
4	Output Q



TP-M12

**Connector assignment FIA-L-08-d0.2-...-C-RL-TPO-...**  
**with tool plug TPO-01**  
(5-pole connector Binder 680):

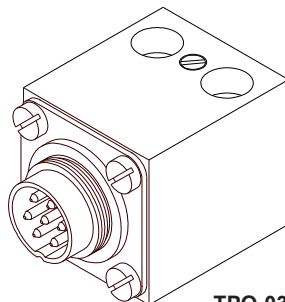
Pin:	Assignment:
1	GND (0V)
2	+Ub (+24VDC ± 10%)
3	Output
4	n.c.
5	Monitoring output



TPO-01

**Connector assignment FIA-L-08-d0.2-...-C-RL-TPX-...**  
**with tool plug TPO-03**  
(7-pole connector Binder 680):

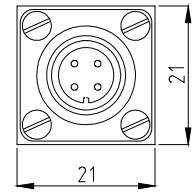
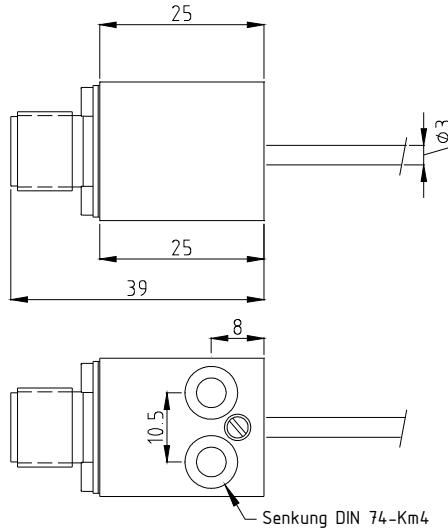
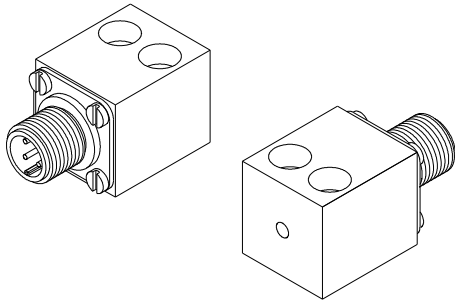
Pin:	Assignment:
1	
2	
3	
4	(to be determined yet)
5	
6	
7	



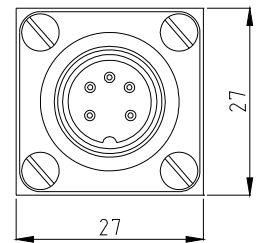
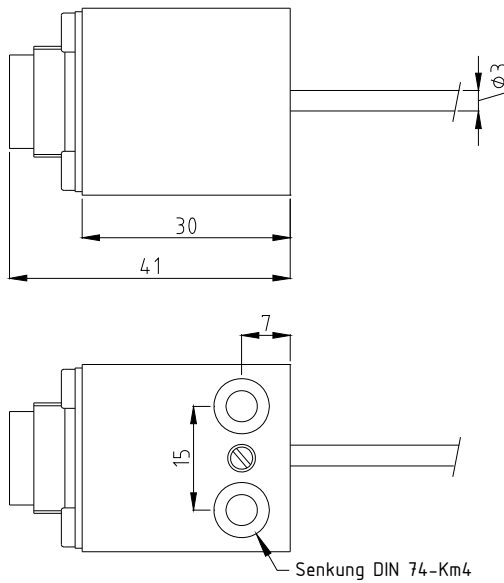
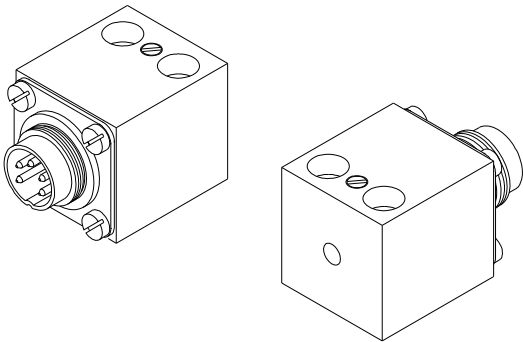
TPO-03

**Tool Plugs**

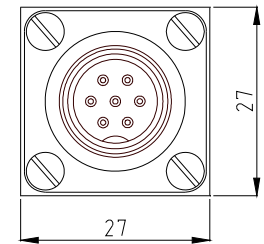
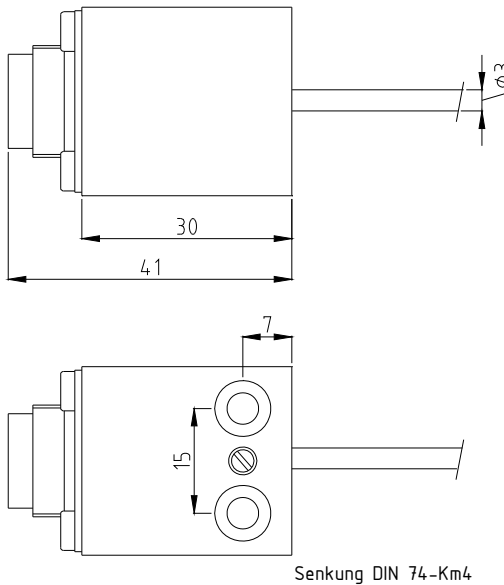
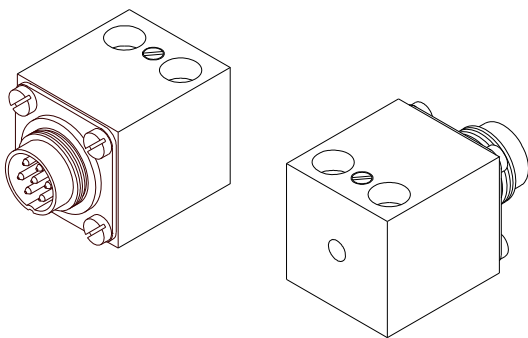
**Variante "TP":  
Tool plug TP-M12:**



**Variante "TPO":  
Tool plug TPO-01:**



**Variante "TPX":  
Tool plug TPO-03:**



(All dimensions in mm)