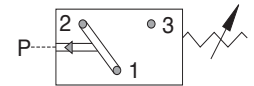


Model	Adjustment Range		Avg. Differential		Repeatability
	in Hg	MilliBar	in Hg	MilliBar	
1	5 - 28	170 - 950	4 - 6	135 - 200	± 2" Hg (68mbar) + 2% of setting



ELECTRICAL:

Standard: 5A, 125V/250VAC - U.L. Recognized*
 5A, 12/24VDC - U.L. Recognized*
 Option -7: 0.02A, 60VDC - U.L. Recognized*
 Gold contacts may be required for less than 12 VDC and 20 milliamps

MANUFACTURER'S OTHER RATING:

5A @ 40VDC

WETTED MATERIAL:

Diaphragm: Buna-N (standard)
 (optional EPDM, KAPTON®, VITON®)
 Housing: Brass
 (optional 316 Stainless Steel)

PROTECTION:

Exposed Terminals – IP00
 DIN HC - IP65
 Flying Leads, M12, Deutsch Integral, Packard
 Plug - IP69

SWITCH TYPE:

Snap Action

MECHANICAL LIFE:

1,000,000 cycles

MEDIA TEMPERATURE RANGE:

Buna - N: -15° to +230°F (-26° to 110°C)
 EPDM: -10° to +250°F (-23° to 121°C)
 KAPTON®: -40° to +239°F (-40° to 115°C)
 VITON®: 0° to +302°F (-18° to 150°C)
 (® Registered Trademark of DuPont)

MAXIMUM OVERPRESSURE:

350 PSI (24 Bar)

WEIGHT:

0.08 lbs (0.04 kg)

[For Certifications and Approvals: Please Inquire]

ORDERING INFORMATION

AVA	- * 1	- * R	- 4M	- A	- FL	- * 1
Model	Set Point	Direction	Port Size	Circuit	Terminal	Options
AVA - Field Adjustable	See Above Adjustment Ranges	R - Rising F - Falling	2M - 1/8 NPT 4M - 1/4 NPT 2G - 1/8 BSPP 4G - 1/4 BSPP (undercut for an o-ring seal)	A - SPST / NO B - SPST / NC C - SPDT	SP - 1/4" x 1/32" Spade TS - 6-32 Terminal Screws FL - 18" Flying Leads FLL - Advise additional length of leads if required H - DIN 43650A Male Half Only HC - DIN 43650A Cable Clamp HN - DIN 43650A 1/2 Conduit (female) HCC - XXX (Specify Length in Inches) DI - Deutsch Integral M12 - M12 X 1 PP - Packard Plug	* - Omit If Standard 1 - VITON® Diaphragm 2 - EPDM Diaphragm 2W - EPDM Diaphragm (WRAS) 3 - KAPTON® Diaphragm 4 - 316 SS Housing 5 - Spiral Restrictor 6 - Oxygen Cleaned 7 - Gold Contacts
AVF - Factory Set	*Model AVF Specify Set Point Required	*Omit For Model AVA	4S - 7/16X20 SAE MALE 4SW - 7/16X20 SAE Swivel 6S - 9/16X18 SAE MALE M10 - M10X1 M12 - M12X1.5 Consult Factory for Non-Standard			**** Call Factory for Shrink Wrap Options & Pricing
					* For other Electrical Terminations refer to page 49	